

13. Front Wheel/Suspension/Steering

Service Information	13-1	Fork Removal/Installation	13-11
Troubleshooting	13-1	Left Fork Disassembly	13-14
Handlebar Cover Removal/Installation	13-2	Left Fork Assembly	13-18
Handlebar Removal/Installation	13-4	Right Fork Disassembly	13-22
Anti-dive Case Disassembly/Assembly	13-5	Right Fork Assembly	13-26
Front Wheel Removal/Installation	13-6	Steering Stem Removal/Installation	13-30
Front Wheel Disassembly/Assembly	13-10		

Service Information

⚠ WARNING

- Riding on damaged rims impairs safe operation of the vehicle.

- When servicing the front wheel, support the motorcycle securely with a jack or other support under the engine.
- Tubeless tire removal, repair, and remounting procedures are covered in the section 16 of the Common Service Manual. When remounting the tire, note the normal rotating direction.
- Refer to the section 15 for brake system information.
- Refer to the section 21 for light, meter and switch information.

Troubleshooting

Hard steering

- Steering head bearing adjustment nut too tight
- Faulty steering head bearings
- Damaged steering head bearings
- Low tire pressure
- Faulty tire

Steers to one side or does not track straight

- Bent fork
- Bent front axle: wheel installed incorrectly
- Faulty steering head bearings
- Bent frame
- Worn wheel bearings
- Worn swingarm pivot bearings

Front wheel wobbling

- Bent rim
- Worn front wheel bearings
- Faulty tire

Wheel turns hard

- Brake misadjusted
- Faulty wheel bearings
- Faulty speedometer gear

Soft suspension

- Weak fork springs
- Low fluid level in fork
- Faulty anti-dive system

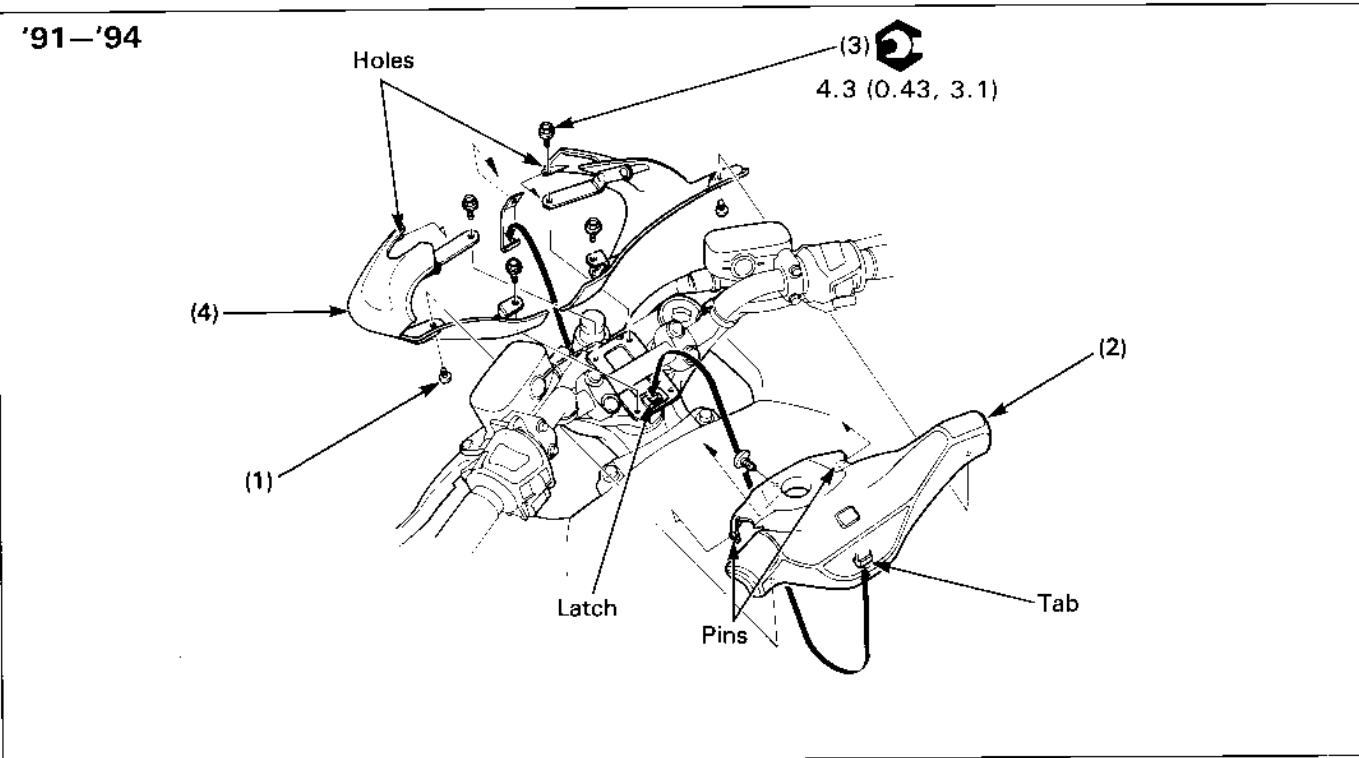
Hard suspension

- Incorrect fluid viscosity
- Bent fork tubes
- Clogged fluid passage

Front suspension noise

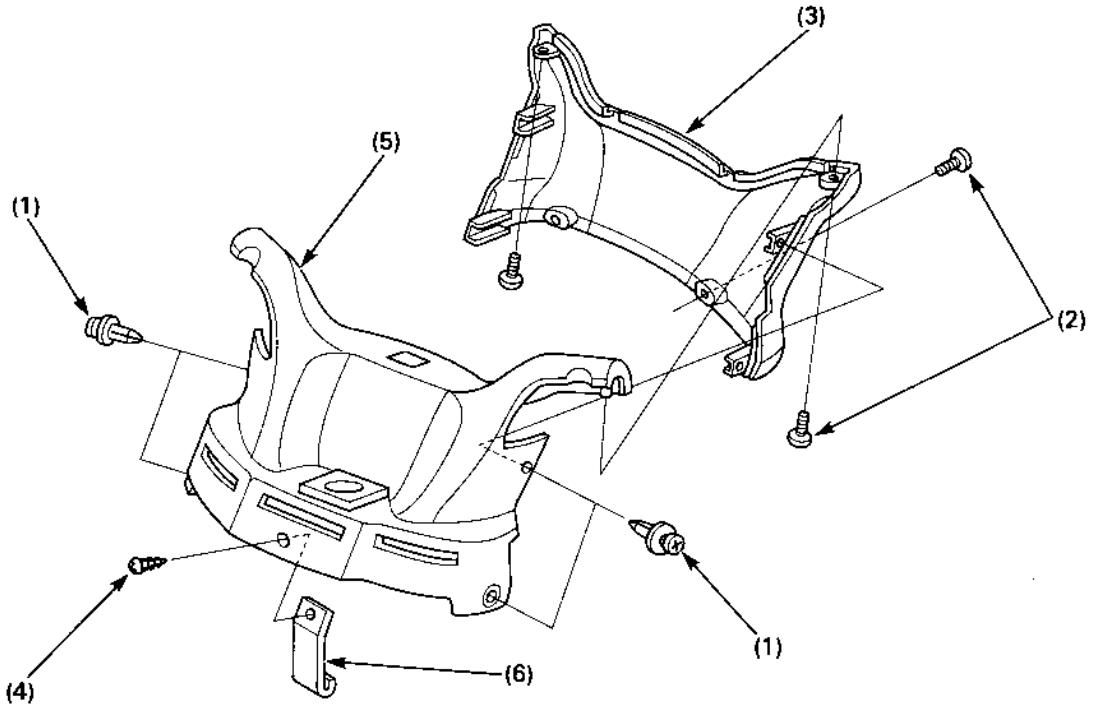
- Low fluid level in fork
- Loose fork fasteners
- Lack of grease in speedometer gearbox

Handlebar Cover Removal/Installation



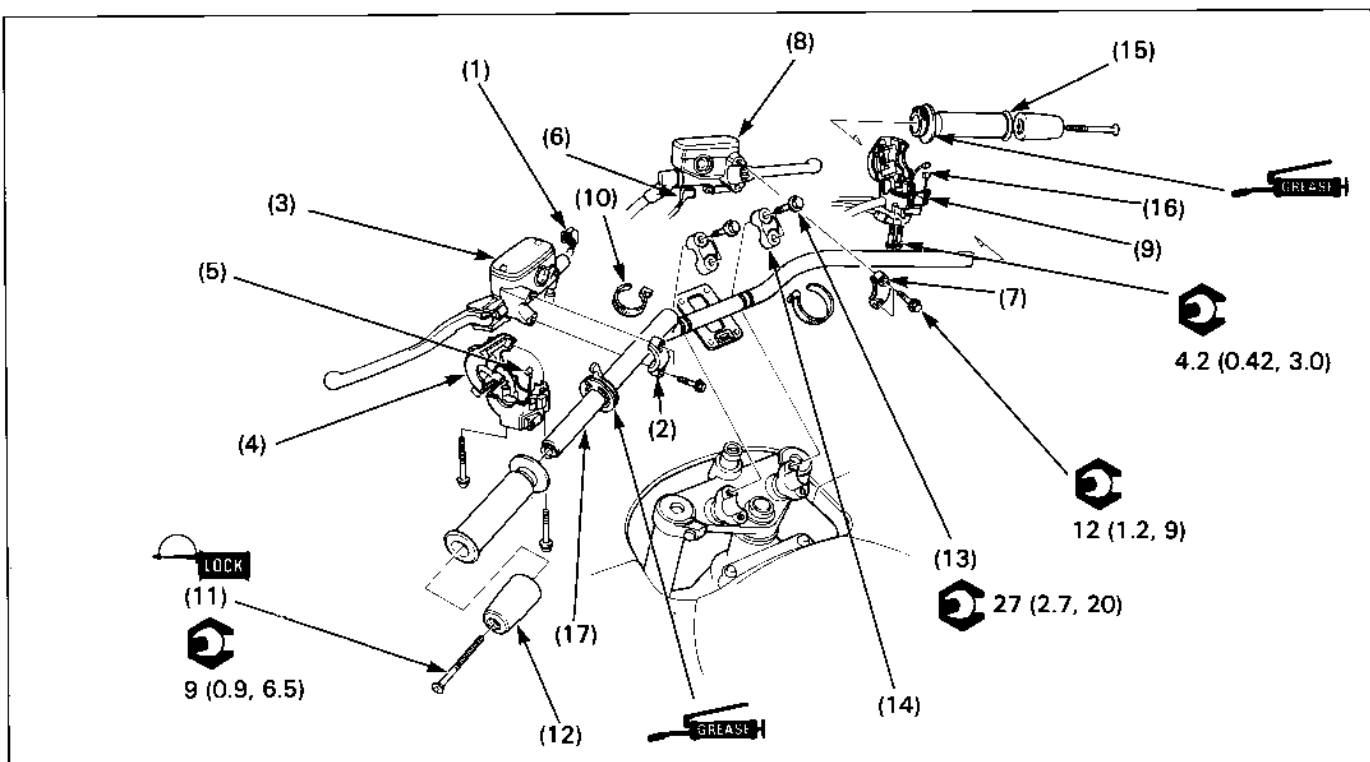
Procedure		Q'ty	Remarks
Removal Order			Installation is in the reverse order of removal.
(1)	Screws	2	At installation, align the pins with the holes in the lower cover and insert the tab into the latch securely.
(2)	Handlebar upper cover	1	
(3)	Bolt	4	
(4)	Handlebar lower cover	2	

After '94



Procedure		Q'ty	Remarks
Removal Order			Installation is in the reverse order of removal.
(1)	Trim clip	4	
(2)	Screw	4	
(3)	Handlebar rear cover	1	
(4)	Screw	1	
(5)	Handlebar front cover	1	
(6)	Handlebar cover stay	1	

Handlebar Removal/Installation

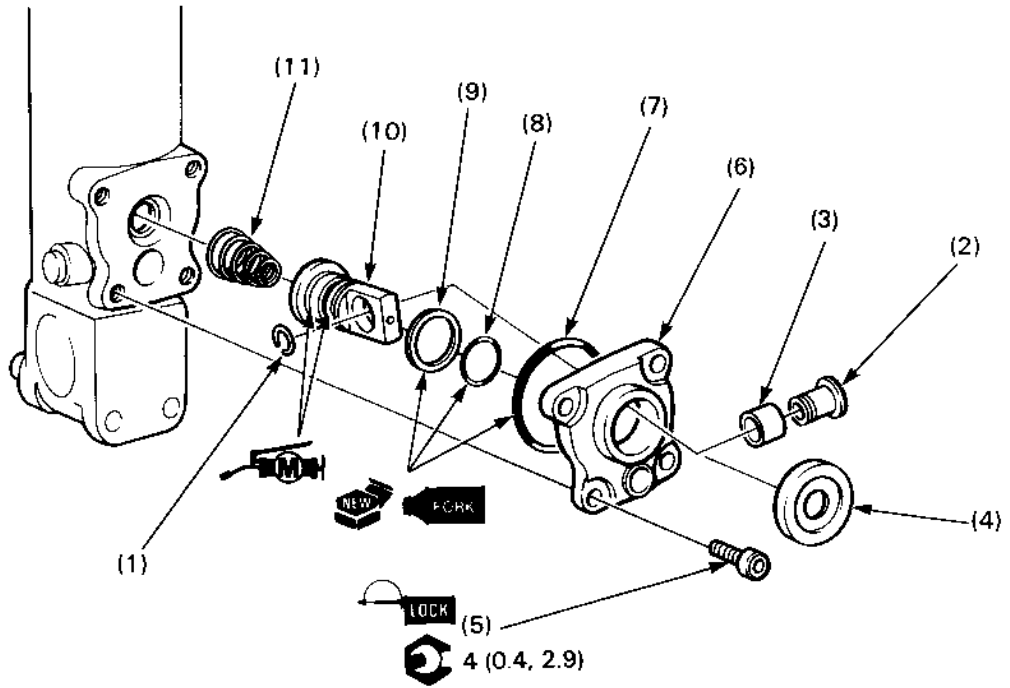


Requisite Service

- Handlebar cover removal/installation (page 13-2)

Procedure		Q'ty	Remarks
Disassembly Order			Assembly is in the reverse order of disassembly.
(1)	Clutch switch wire	2	
(2)	Clutch master cylinder holder	1	
(3)	Clutch master cylinder	1	CAUTION • Keep master cylinder upright, to prevent air from entering the system.
(4)	Left handlebar switch	1	
(5)	Choke cable	1	Disconnect from the choke lever flange.
(6)	Front brake light switch wire	2	
(7)	Brake master cylinder holder	1	
(8)	Brake master cylinder	1	CAUTION • Keep master cylinder upright, to prevent air from entering the system.
(9)	Right handlebar switch	1	
(10)	Wire band	2	
(11)	Handlebar weight screw	2	
(12)	Handlebar weight	2	
(13)	Handlebar upper holder bolt	4	
(14)	Handlebar upper holder	2	
(15)	Throttle grip	1	
(16)	Throttle cable	2	Disconnect from the throttle grip flange.
(17)	Handlebar	1	

Anti-dive Case Disassembly/Assembly



▲ WARNING

- The anti-dive case is under spring pressure. Use care when removing the case to keep it from becoming a projectile.

Requisite Service

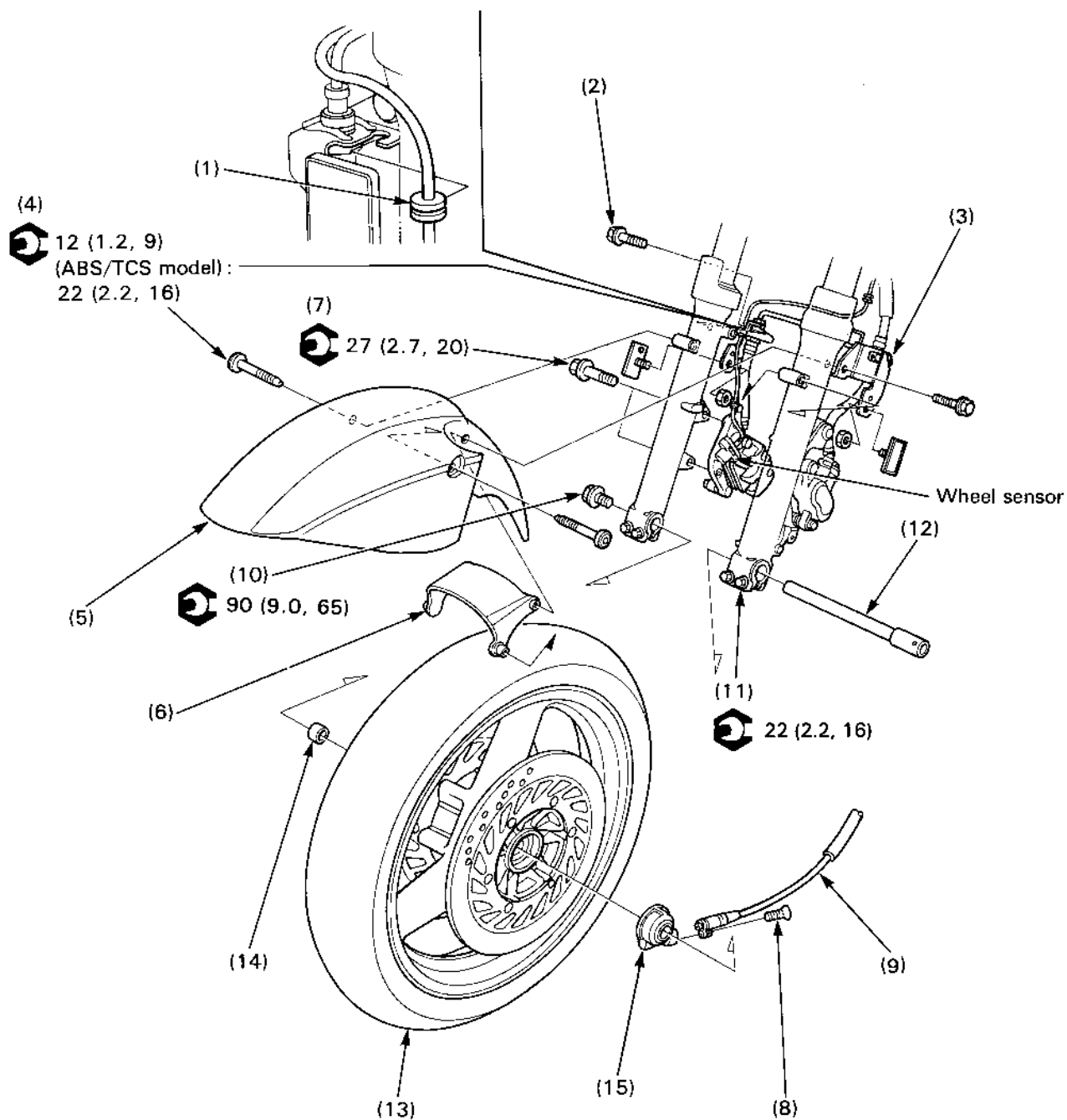
- Left fork oil draining (Standard and ABS/TCS model)
- Right fork oil draining (LBS-ABS/TCS model)

Procedure	Q'ty	Remarks
Disassembly Order		Assembly is in the reverse order of disassembly.
(1) Stop ring	1	
(2) Pivot collar	1	
(3) Bushing	1	
(4) Rubber boot	1	
(5) Socket bolt	4	
(6) Case cover	1	
(7) O-ring	1	
(8) Piston seal	1	
(9) Oil seal	1	
(10) Anti-dive piston	1	
(11) Spring	1	

Front Wheel Removal/Installation

Standard and ABS/TCS Model

ABS/TCS model shown:



▲ WARNING

- A contaminated brake disc or pad reduces stopping power. Discard contaminated pads and clean a contaminated disc with a high quality brake degreasing agent.
- Brake dust may contain asbestos. Inhaled asbestos fibers have been found to cause respiratory disease and cancer.
- Never use an air hose or dry brush to clean brake assembly. Use an OSHA-approved vacuum cleaner or an alternate method approved by OSHA, designed to minimize the hazard caused by airborne asbestos fibers.

CAUTION

- After installing the front wheel, apply the front brake and check the brake operation.

NOTE

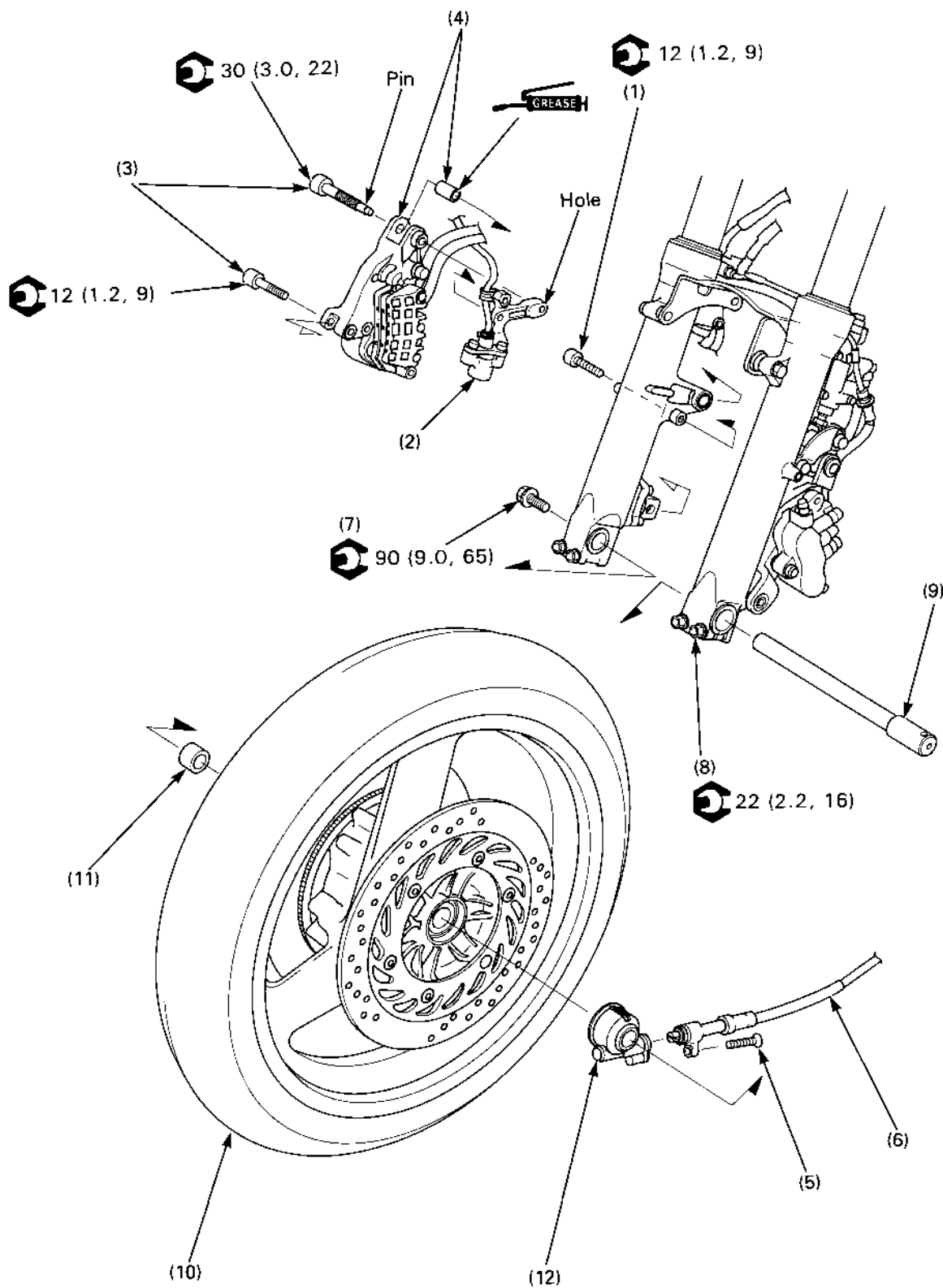
- Do not depress the brake lever when the caliper is removed, or it will be difficult to refit the disc between the brake pads.

Requisite Service

- Raise the wheel off the ground by placing a jack or other support under the engine.

Procedure	Q'ty	Remarks
Removal Order		Installation is in the reverse order of removal.
(1) Wheel sensor wire grommet (ABS/TCS model only)	2	Remove the left grommet first.
(2) Bolt	2	
(3) Front brake hose stay	2	Remove from the front forks.
(4) Socket bolt	2	
(5) Front fender	1	
(6) Front fender plate	1	
(7) Right front brake caliper mounting bolt	2	CAUTION <ul style="list-style-type: none"> • ABS/TCS model only: Be careful not to damage the tip of the wheel sensor. • Do not hang the caliper from the brake hose. Air may enter the brake system.
(8) Speedometer cable set screw	1	
(9) Speedometer cable	1	
(10) Front axle bolt	1	
(11) Front axle pinch bolt	4	Loosen the bolts.
(12) Front axle	1	
(13) Front wheel assembly	1	
(14) Right side collar	1	
(15) Speedometer gear box	1	

LBS-ABS/TCS Model



⚠ WARNING

- A contaminated brake disc or pad reduces stopping power, discard contaminated pads and clean contaminated disc with a high quality degreasing agent.
- Inhaled asbestos fibers have been found to cause respiratory disease and cancer. Never use an air hose or dry brush to clean brake assemblies.

CAUTION

- After installing the front wheel, operate the brake lever and pedal and check the brake operation (page 3-13).

NOTE

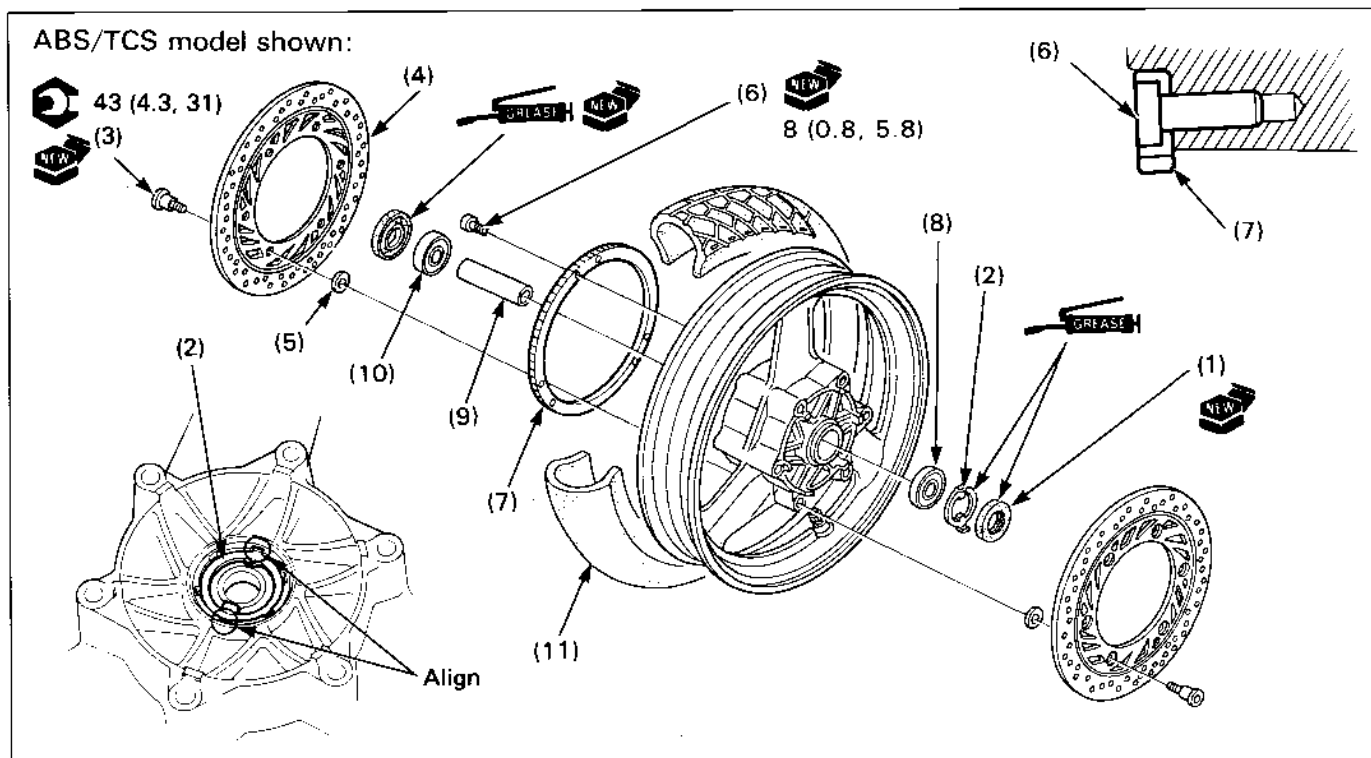
- Do not depress the brake lever or pedal when the front caliper is removed, or it will be difficult to refit the disc between the brake pads.

Requisite Service

- Raise the wheel off the ground by placing a jack or other support under the engine.
- Front fender removal/installation (page 2-11).

Procedure		Q'ty	Remarks
(1)	Removal Order Sensor bracket bolt	1	Installation is in the reverse order of removal. CAUTION • Be careful not to damage the tip of the wheel sensor. NOTE • When tightening, perform the air gap inspection (page 16-B-34).
(2)	Wheel sensor assembly	1	NOTE • At installation, route the sensor wire properly (page 1-25), and align the hole in the bracket with the pin of the upper caliper mounting bolt.
(3)	Right front brake caliper mounting bolt	2	CAUTION • Do not hang the caliper from the brake hose/pipe.
(4)	Front brake caliper/pivot collar	1/1	
(5)	Speedometer cable setting screw	1	
(6)	Speedometer cable	1	
(7)	Front axle bolt	1	
(8)	Front axle pinch bolt	4	Only loosen these bolts.
(9)	Front axle	1	
(10)	Front wheel assembly	1	
(11)	Right side collar	1	
(12)	Speedometer gear box	1	

Front Wheel Disassembly/Assembly



NOTE

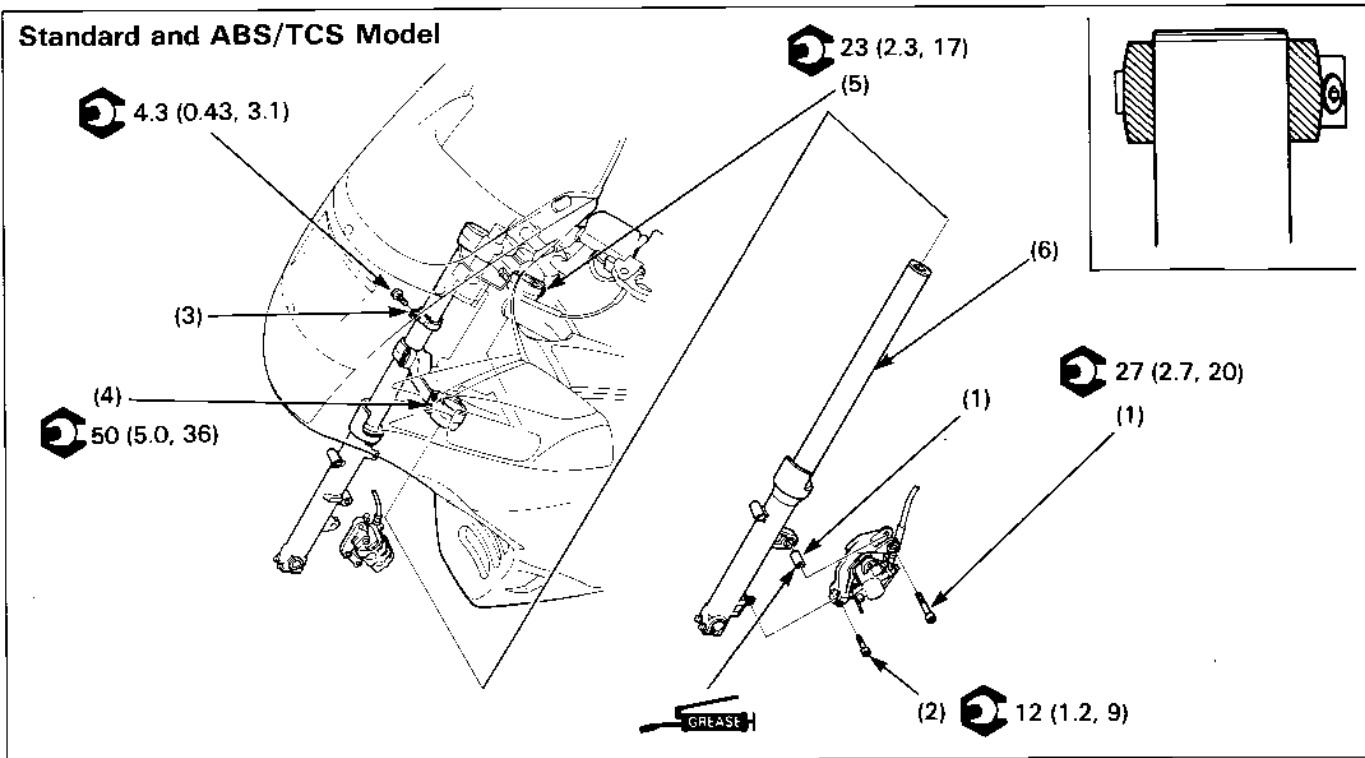
- The left brake disc has "L" mark and the right brake disc has "R" mark. Install them on the correct sides.
- Always replace wheel bearings as a set.
- For wheel bearing replacement, refer to the section 1 of the Common Service Manual.

Requisite Service

- Front wheel removal/installation (page 13-6)

Procedure	Q'ty	Remarks
Disassembly Order		Assembly is in the reverse order of disassembly.
(1) Dust seal	2	
(2) Speedometer gear retainer	1	At installaion, align the tabs with the slots in the wheel hub
(3) Brake disc bolt	12	
(4) Brake disc	2	Install the disc with the "L" mark on the left side, and the disc with the "R" mark on the right side.
(5) Gasket	12	
(6) Torx bolt (T25) (ABS/TCS or LBS-ABS/TCS model)	6	
(7) Pulser ring (ABS/TCS or LBS-ABS/TCS model)	1	Install the pulser ring with the concave portion of bolt hole facing out. CAUTION • Be careful not to deform, distort, or damage the pulser ring.
(8) Left wheel bearing (6004UU)	1	
(9) Distance collar	1	
(10) Right wheel bearing (6004UU)	1	At installation, drive a new right wheel bearing in the hub first, then drive a new left bearing in.
(11) Front tire	1	

Fork Removal/Installation



NOTE

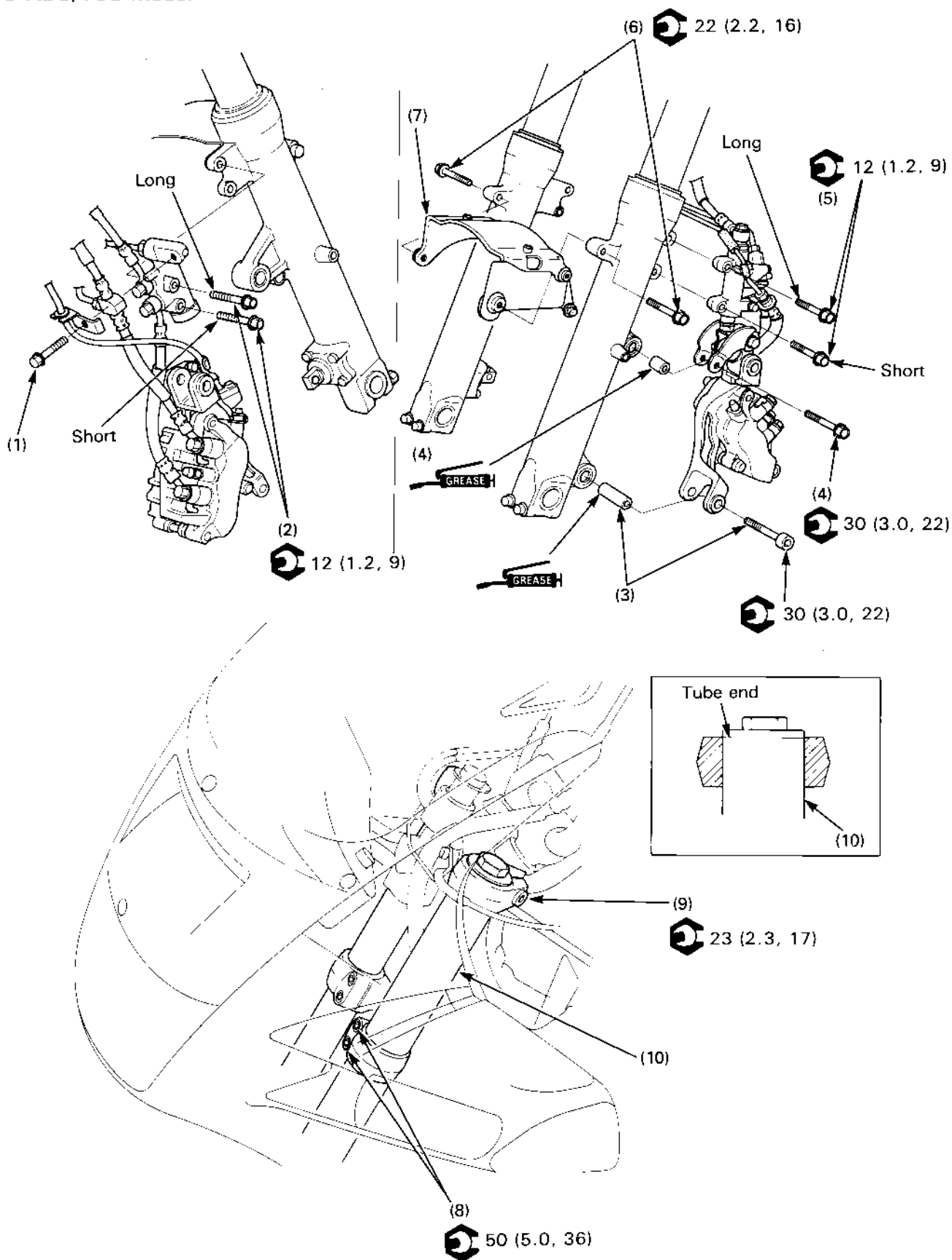
- When the fork is to be disassembled, loosen the fork bolt but do not remove it.
- After assembling the fork, tighten the fork cap temporarily before tightening the upper fork pinch bolt.

Requisite Service

- Handlebar cover removal/installation (page 13-2)
- Front wheel removal/installation (page 13-6)

Procedure	Q'ty	Remarks
Removal Order		Installation is in the reverse order of removal.
(1) Left brake caliper pivot bolt (upper)/collar	1/1	CAUTION • Do not hang the brake caliper from the brake hose. Right fork only. Loosen the bolts. Loosen the bolt NOTE • Be careful not to let the fork drop when loosening the bolt. At installation, align the end of the fork tube with the upper surface of the top bridge.
(2) Left brake caliper pivot bolt (lower)	1	
(3) Brake hose clamp (Standard model)	1	
(4) Lower fork pinch bolt	4	
(5) Upper fork pinch bolt	2	
(6) Fork assembly	1	

LBS-ABS/TCS Model



CAUTION

- When performing this service, provide the calipers with a support (s). Do not hang the calipers from the brake hose and pipe.

NOTE

- When the fork is to be disassembled, loosen the fork cap but do not remove it yet.
- After assembling the fork, tighten the fork cap which is temporarily tightened before tightening the upper fork pinch bolt.

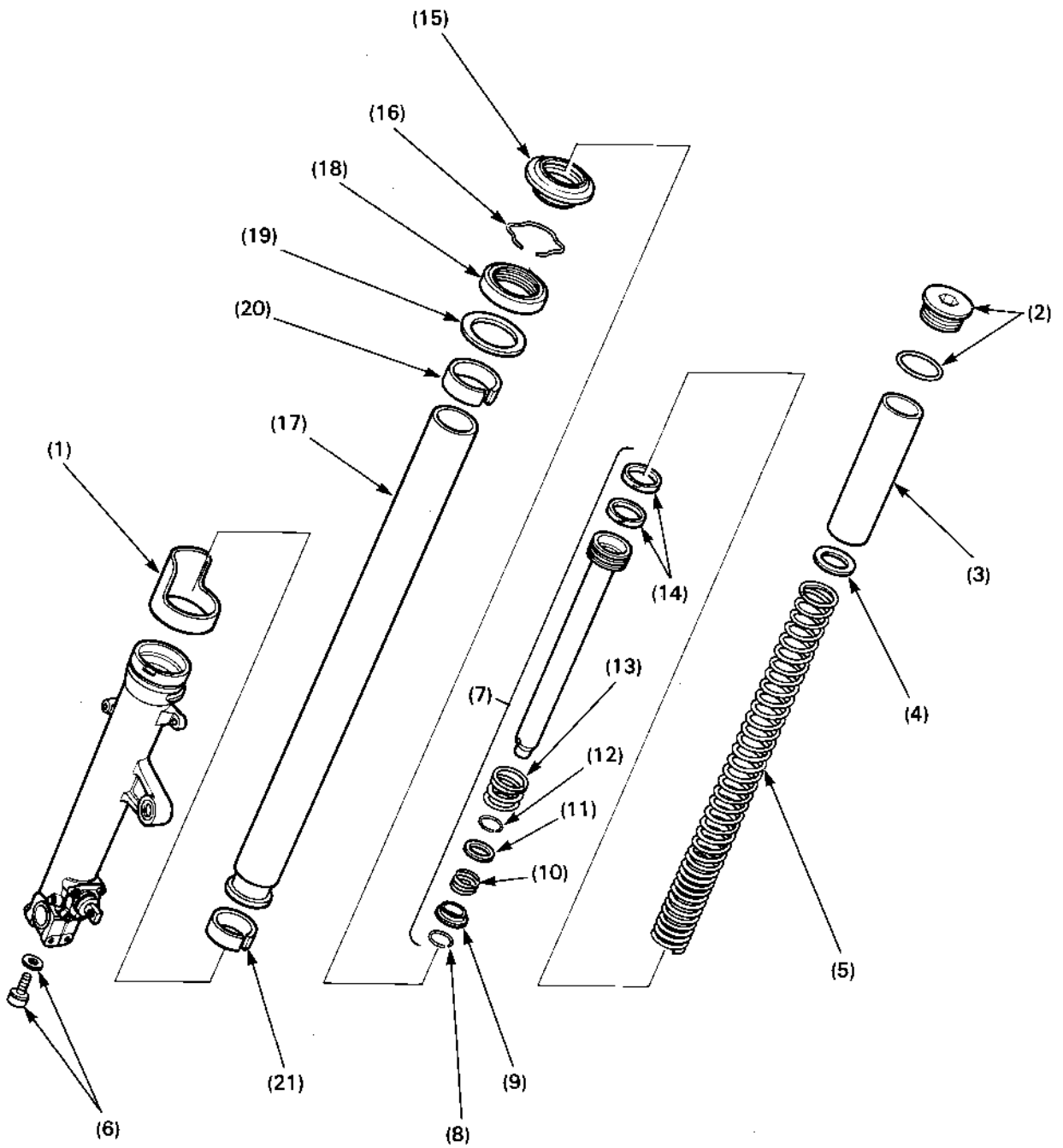
Requisite Service

- Handlebar cover removal/installation (page 13-2).
- Front wheel removal/installation (page 13-6).

Procedure		Q'ty	Remarks
	Removal Order		Installation is in the reverse order of removal.
(1)	Oil pipe and wire stay fixing bolt	1	
(2)	Delay valve mounting bolt	2	Secure the upper bolt with the fender plate.
(3)	Left brake caliper pivot bolt (lower)/collar	1/1	
(4)	Secondary master cylinder link plate bolt (lower; slider-to-link bolt)/collar	1/1	Secure the upper bolt with the fender plate.
(5)	Secondary master cylinder mounting bolt	2	
(6)	Fender plate mounting bolt	2	
(7)	Front fender plate	1	
(8)	Lower fork pinch bolt	4	Only loosen.
(9)	Upper fork pinch bolt	2	Only loosen.
			NOTE
			• Be careful not to let the fork drop when loosening the bolt.
(10)	Fork assembly	1	At installation, align the end of the fork tube with the upper surface of the top bridge.

Left Fork Disassembly

Standard and ABS/TCS Model



WARNING

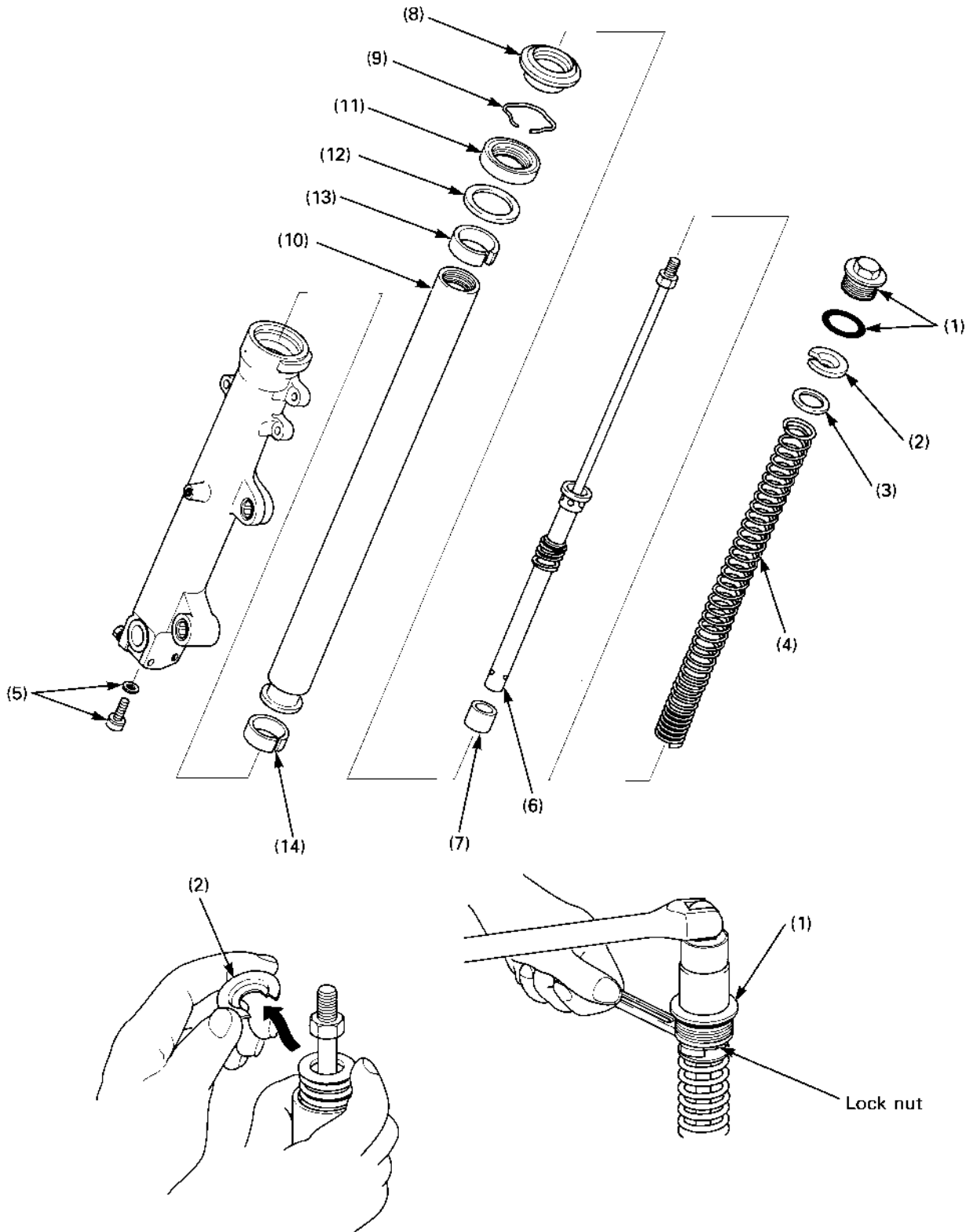
- The fork cap is under spring pressure. Use care when removing it.

Requisite Service

- Fork removal (page 13-11)

	Procedure	Q'ty	Remarks
	Disassembly Order		
(1)	Fork tube protector	1	NOTE • Do not remove unless necessary.
(2)	Fork cap/O-ring	1/1	
(3)	Spring collar	1	
(4)	Spring seat	1	
(5)	Fork spring	1	Drain the fork fluid after removing the spring.
(6)	Socket bolt/washer	1/1	
(7)	Fork piston assembly	1	
(8)	Stopper ring	1	Remove from the fork piston.
(9)	Oil lock valve	1	
(10)	Oil lock valve spring	1	
(11)	Spring seat	1	
(12)	Stopper ring	1	
(13)	Rebound spring	1	
(14)	Piston rings	2	NOTE • Do not remove the piston rings unless they are to be replaced.
(15)	Dust seal	1	
(16)	Stopper ring	1	CAUTION • Be careful not to damage the fork tube sliding surface.
(17)	Fork tube	1	
(18)	Oil seal	1	
(19)	Back-up ring	1	
(20)	Slider bushing	1	
(21)	Fork tube bushing	1	NOTE • Do not remove bushing unless it is to be replaced.

LBS-ABS/TCS Model



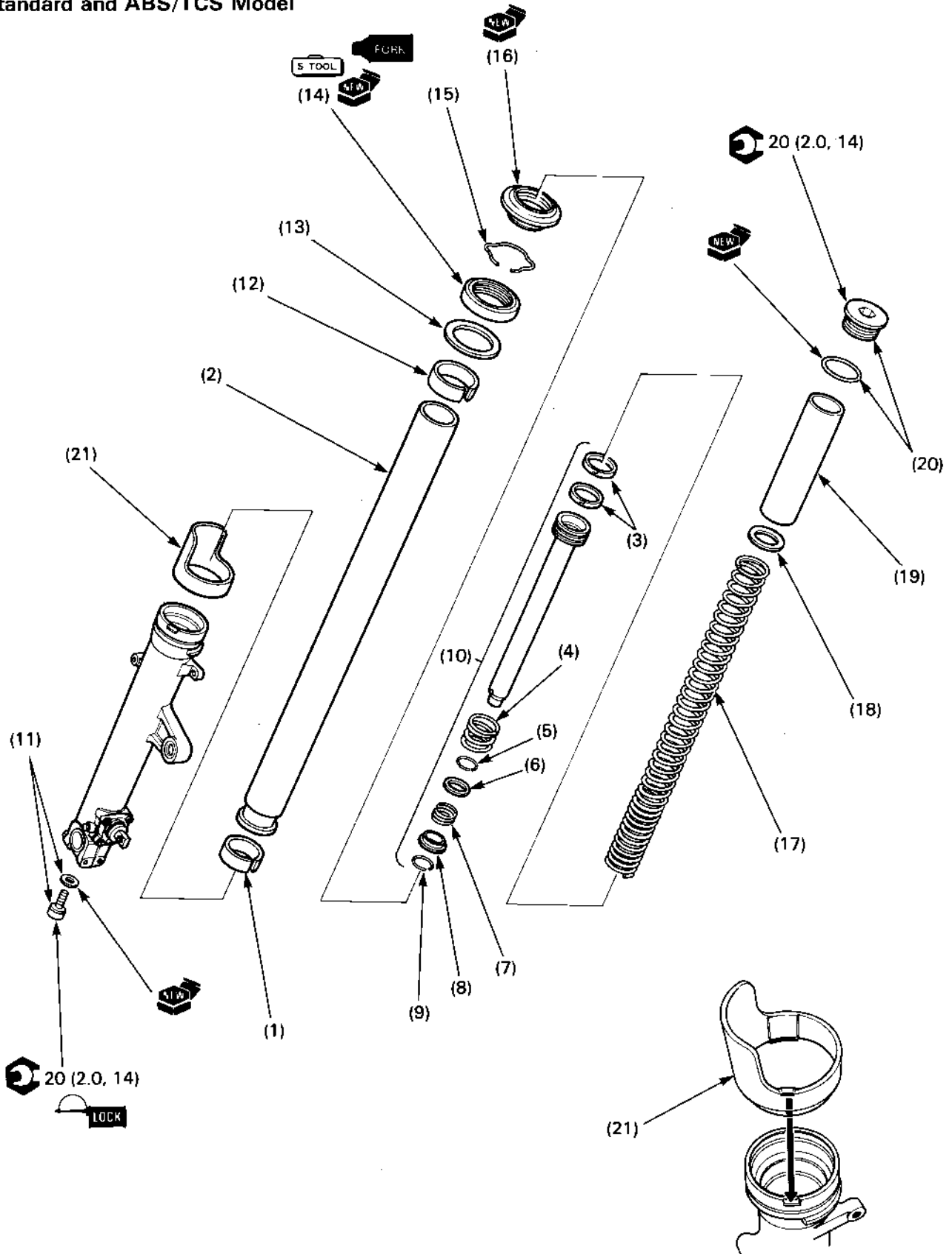
Requisite Service

- Fork removal (page 13-12).

Procedure		Q'ty	Remarks
	Disassembly Order		
(1)	Fork cap/O-ring	1/1	Remove the cap from the fork tube, then remove it from the fork damper rod while holding the lock nut as shown.
(2)	Spring seat stopper	1	Remove the stopper while compressing the fork spring as shown.
(3)	Spring seat	1	
(4)	Fork spring	1	
(5)	Socket bolt/washer	1/1	
(6)	Fork damper	1	
(7)	Oil lock piece	1	
(8)	Dust seal	1	
(9)	Stopper ring	1	CAUTION • Be careful not to damage the fork tube sliding surface.
(10)	Fork tube	1	
(11)	Oil seal	1	
(12)	Back-up ring	1	
(13)	Slider bushing	1	
(14)	Fork tube bushing	1	NOTE • Do not remove the bushing unless it is to be replaced.

Left Fork Assembly

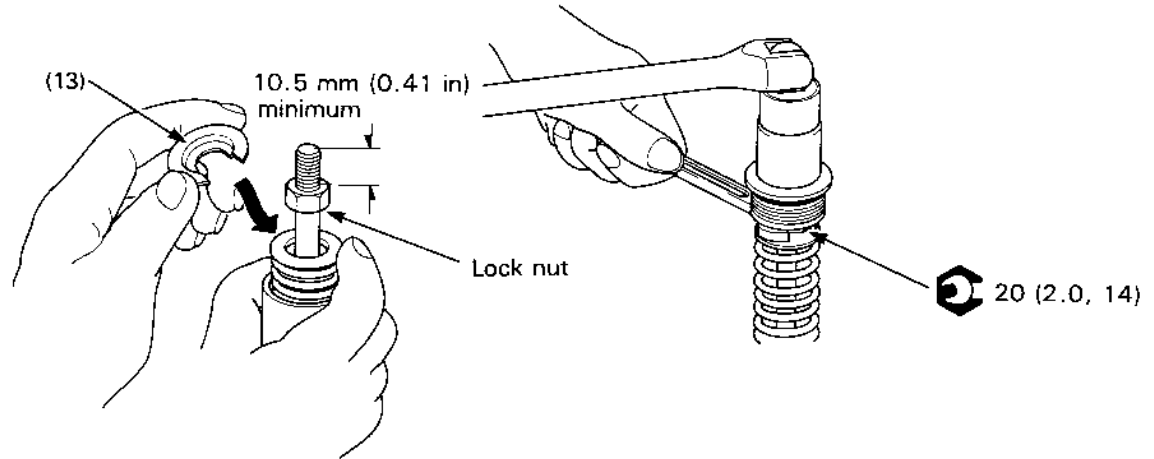
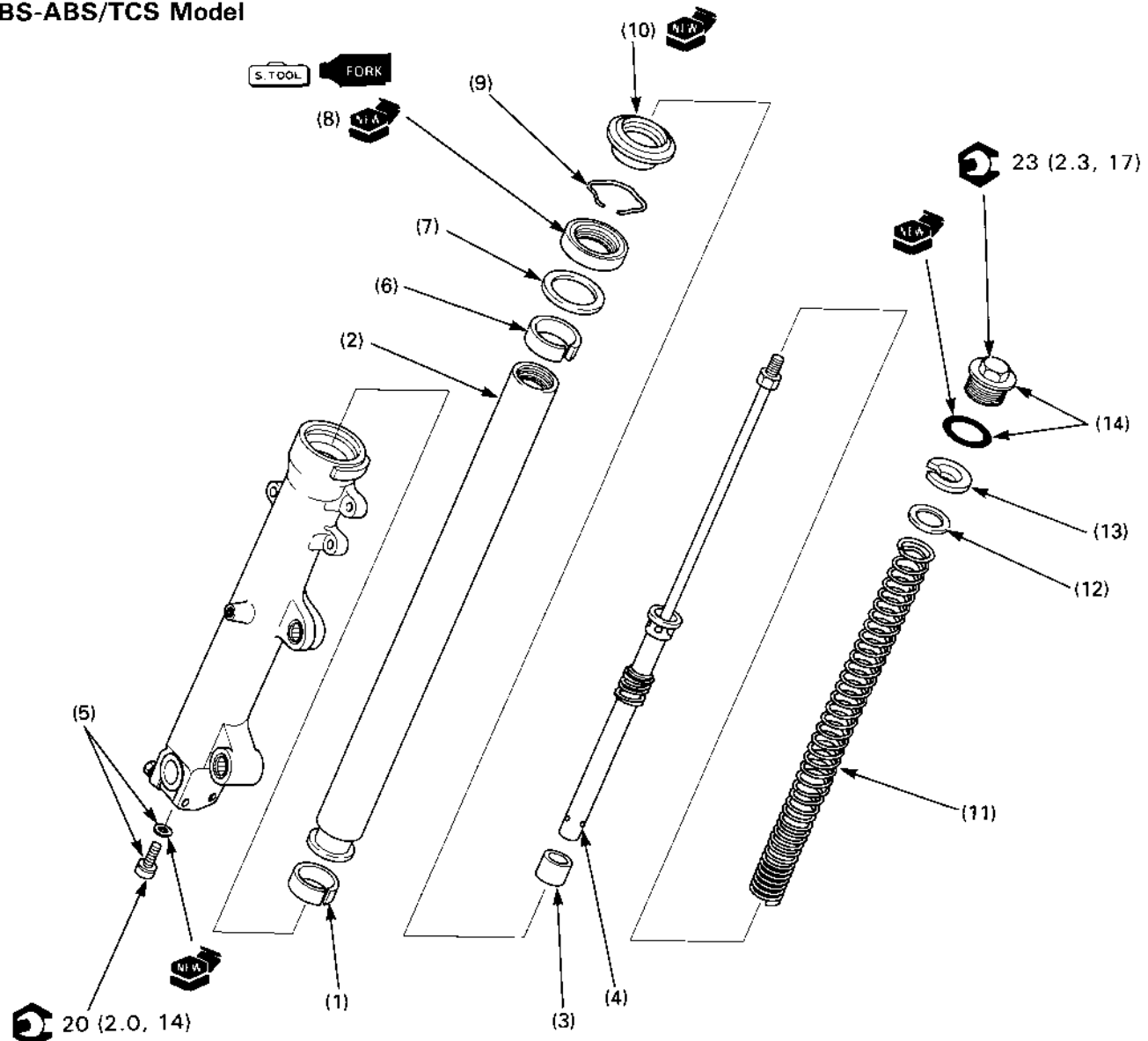
Standard and ABS/TCS Model



Procedure		Q'ty	Remarks
Assembly Order			
(1)	Fork tube bushing	1	
(2)	Fork tube	1	
(3)	Piston rings	2	Install onto the fork piston
(4)	Rebound spring	1	
(5)	Stopper ring	1	
(6)	Spring seat	1	
(7)	Oil lock valve spring	1	
(8)	Oil lock valve	1	
(9)	Stopper ring	1	
(10)	Fork piston assembly	1	
(11)	Socket bolt/washer	1/1	
(12)	Slider bushing	1	
(13)	Back-up ring	1	
(14)	Oil seal	1	NOTE <ul style="list-style-type: none"> • Wrap vinyl tape around the fork tube top end to avoid damaging the oil seal lip during installation. • Drive the slider bushing and oil seal into the slider using the fork seal driver body (07947—KA50100) and attachment (07947—KFO0100).
(15)	Stopper ring	1	CAUTION <ul style="list-style-type: none"> • Be careful not to damage the fork tube sliding surface.
(16)	Dust seal	1	Pour in the fork fluid to the specified level with the fork fully compressed before installing the fork spring.
(17)	Fork spring	1	Wipe fluid off the spring thoroughly using a clean lint free cloth and install with the tightly wound coil end facing down.
(18)	Spring seat	1	
(19)	Spring collar	1	
(20)	Fork cap/O-ring	1/1	Screw in the bolt, but do not tighten yet. CAUTION <ul style="list-style-type: none"> • Be careful not to cross-thread the fork cap.
(21)	Fork tube protector	1	Align the lug with the groove in the fork slider. NOTE <ul style="list-style-type: none"> • For easy installation, immerse in hot water (50—60°C/122—140°F).

After completing fork assembly, refer to fork installation procedures (page 13-11).

LBS-ABS/TCS Model

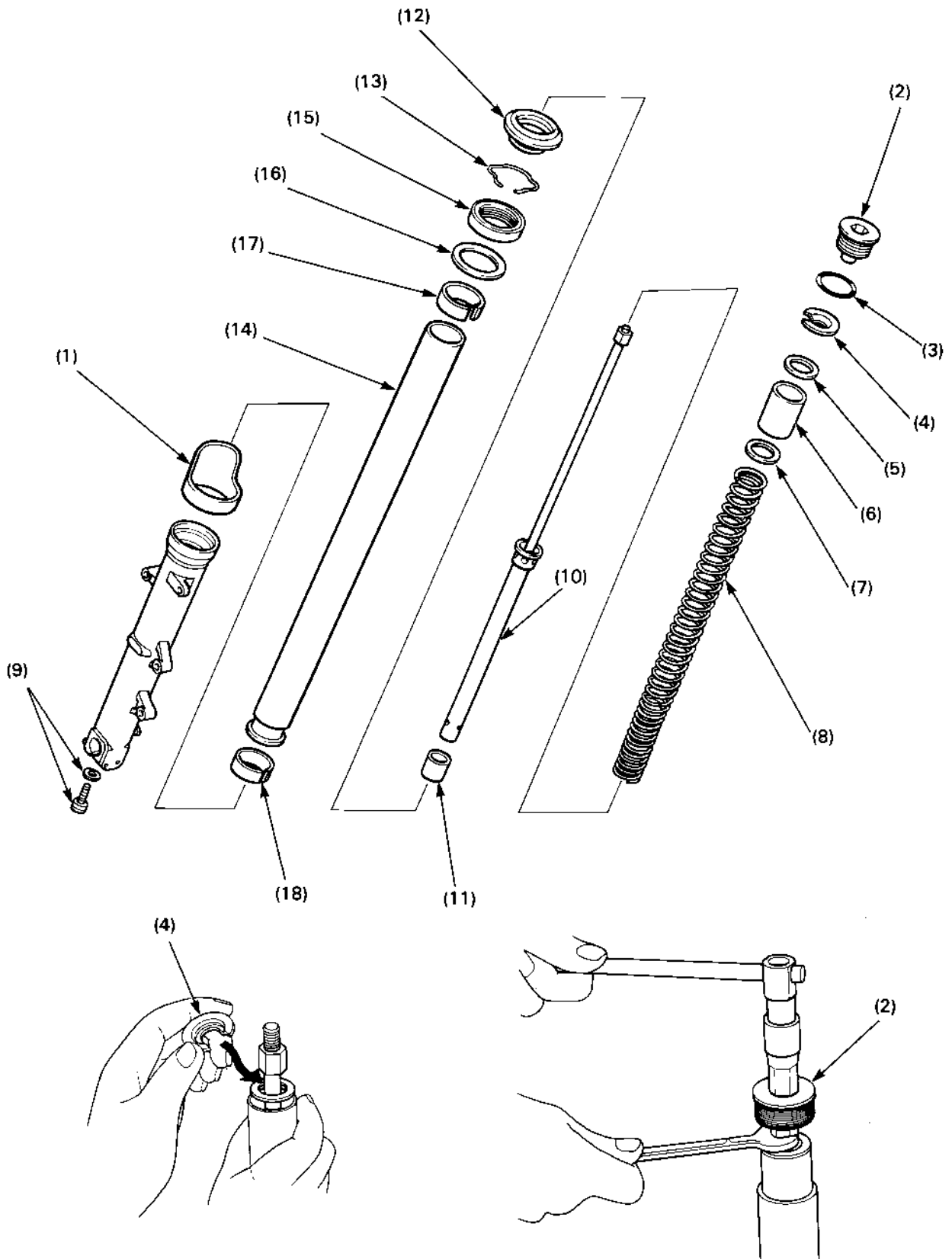


	Procedure	Q'ty	Remarks
	Assembly Order		
(1)	Fork tube bushing	1	
(2)	Fork tube	1	
(3)	Oil lock piece	1	Install onto the end of the fork damper.
(4)	Fork damper	1	
(5)	Socket bolt/washer	1/1	
(6)	Slider bushing	1	
(7)	Back-up ring	1	
(8)	Oil seal	1	NOTE <ul style="list-style-type: none"> • Wrap vinyl tape around the fork tube top end to avoid damaging the oil seal lip during installation. • Drive the slider bushing and oil seal into the slider using the fork seal driver body (07947-KA50100) and attachment (07947-KA40200).
(9)	Stopper ring	1	CAUTION <ul style="list-style-type: none"> • Be careful not to damage the fork tube sliding surface.
(10)	Dust seal	1	Pour in the fork fluid to the specified level before installing the fork spring.
(11)	Fork spring	1	Wipe fluid off the spring thoroughly using a clean lint-free cloth and install with the tightly wound coil end facing down.
(12)	Spring seat	1	
(13)	Spring seat stopper	1	Install the stopper between the spring seat and lock nut while compressing the fork spring as shown. NOTE <ul style="list-style-type: none"> • Before installing the stopper, measure the distance between the lock nut and the top of the damper rod, it should be at least 10.5 mm (0.41 in)
(14)	Fork cap/O-ring	1/1	Install the fork cap onto the damper rod and tighten the lock nut as shown, then screw it into the fork tube, but do not tighten yet. CAUTION <ul style="list-style-type: none"> • Be careful not to cross-thread the fork cap.

After completing fork assembly, refer to fork installation procedure (page 13-13).

Right Fork Disassembly

Standard and ABS/TCS Model

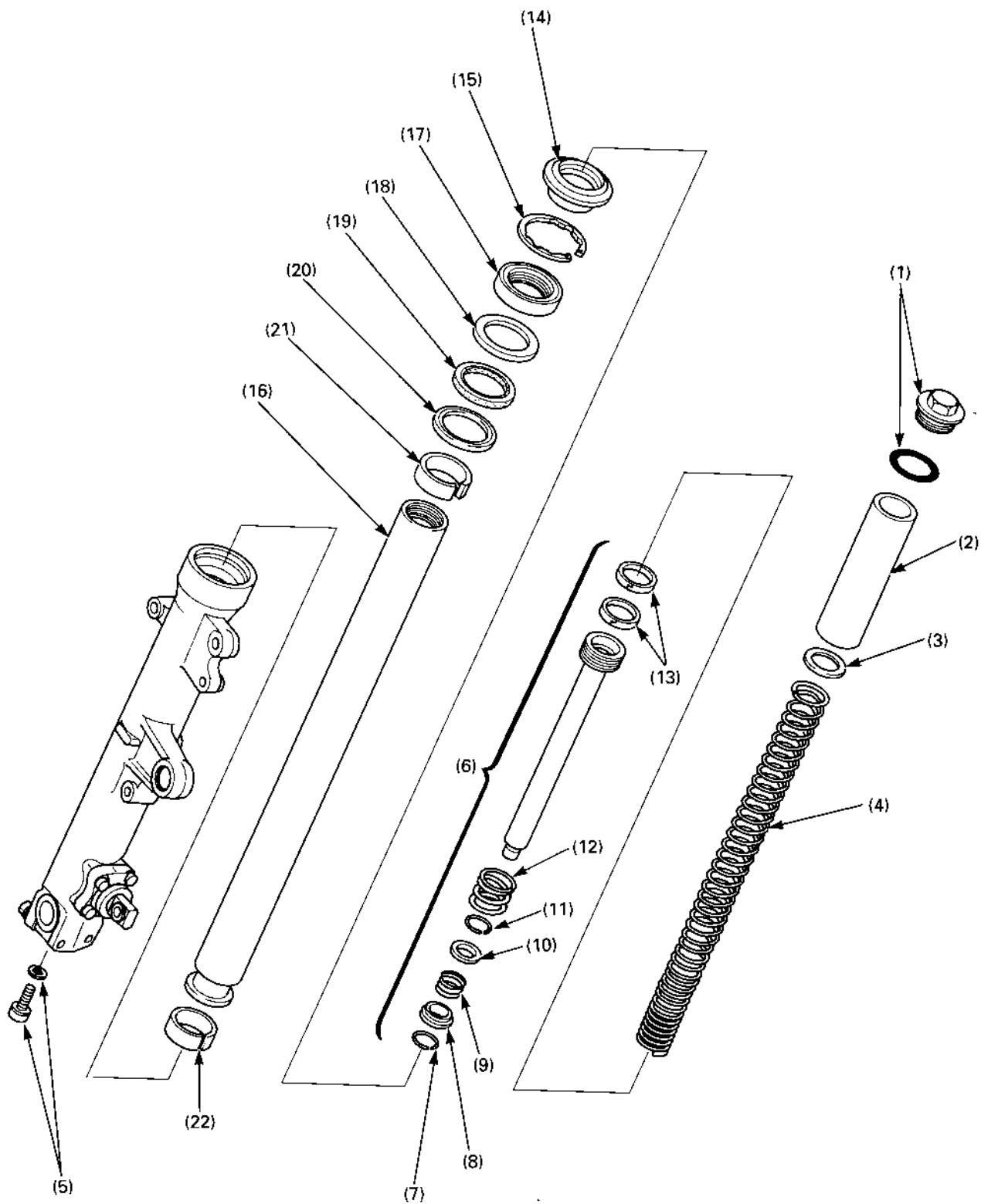


Requisite Service

- Fork removal (page 13-11)

Procedure		Q'ty	Remarks
Disassembly Order			
(1)	Fork tube protector	1	NOTE • Do not remove unless necessary.
(2)	Fork cap	1	Remove the fork cap from the fork tube, then remove it from the fork damper rod while holding the lock nut as shown.
(3)	O-ring	1	
(4)	Spring seat stopper	1	Remove the stopper while compressing the fork spring as shown.
(5)	Spring seat	1	
(6)	Spring collar	1	
(7)	Spring seat	1	
(8)	Fork spring	1	
(9)	Socket bolt/washer	1/1	
(10)	Fork damper	1	
(11)	Oil lock piece	1	
(12)	Dust seal	1	
(13)	Stopper ring	1	CAUTION • Be careful not to damage the fork tube sliding surface.
(14)	Fork tube	1	
(15)	Oil seal	1	
(16)	Back-up ring	1	
(17)	Slider bushing	1	
(18)	Fork tube bushing	1	NOTE • Do not remove the bushing unless it is to be replaced.

LBS-ABS/TCS Model



⚠ WARNING

- The fork cap is under spring pressure. Use care when removing it.

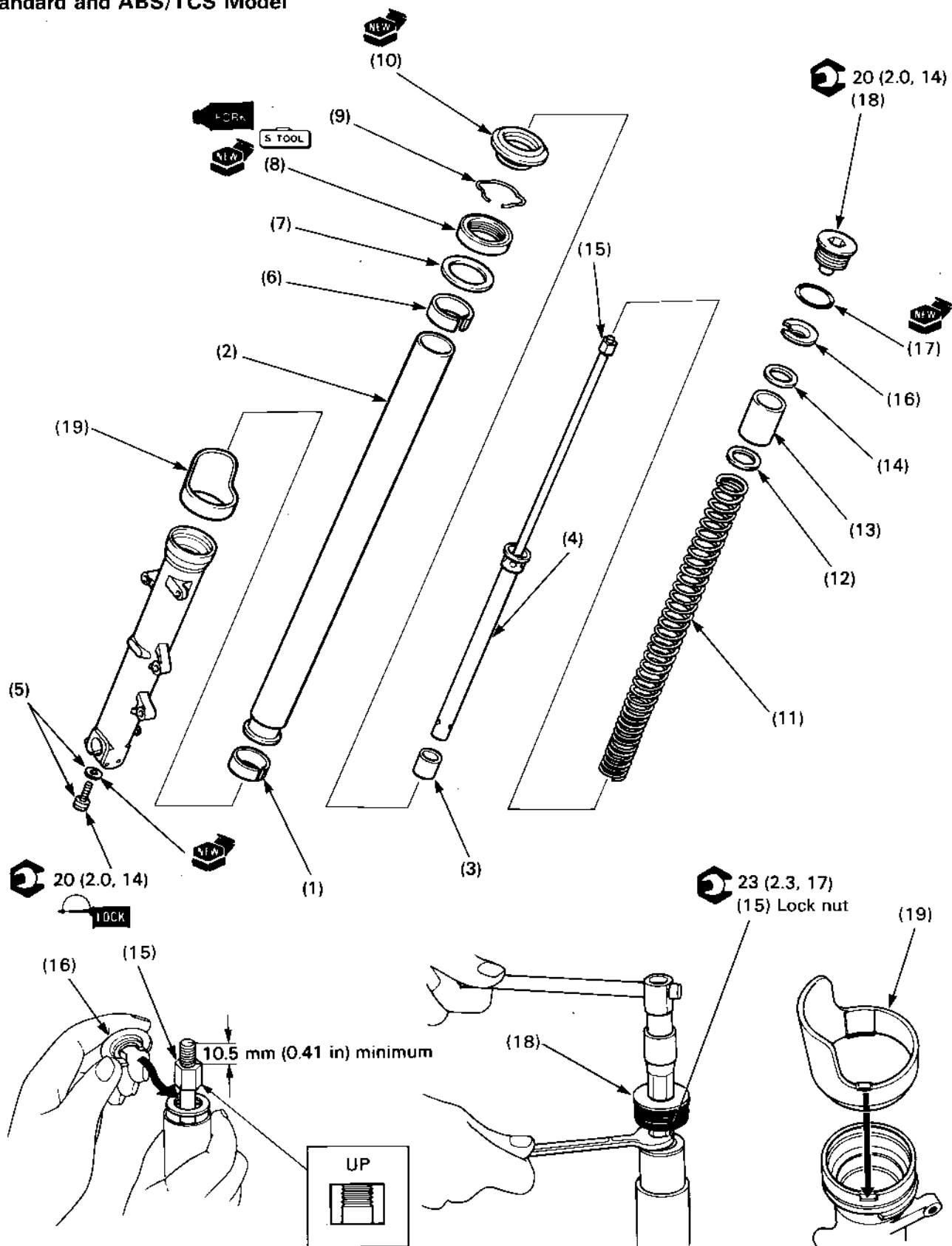
Requisite Service

- Fork removal (page 13-12).

Procedure	Q'ty	Remarks
Disassembl Order		
(1) Fork cap/O-ring	1/1	
(2) Spring collar	1	
(3) Spring seat	1	
(4) Fork spring	1	Drain the fork fluid after removing the spring.
(5) Socket bolt/washer	1/1	
(6) Fork piston assembly	1	
(7) Stopper ring	1	Remove from the fork piston.
(8) Oil lock valve	1	
(9) Oil lock valve spring	1	
(10) Spring seat	1	
(11) Stopper ring	1	
(12) Rebound spring	1	
(13) Piston ring	2	NOTE • Do not remove the piston rings unless they are to be replaced.
(14) Dust seal	1	
(15) Snap ring	1	CAUTION • Be careful not to damage the fork tube sliding surface.
(16) Fork tube	1	
(17) Oil seal	1	
(18) Back-up ring (upper)	1	
(19) Packing	1	
(20) Back-up ring (lower)	1	
(21) Slider bushing	1	
(22) Fork tube bushing	1	NOTE • Do not remove bushing unless it is to be replaced.

Right Fork Assembly

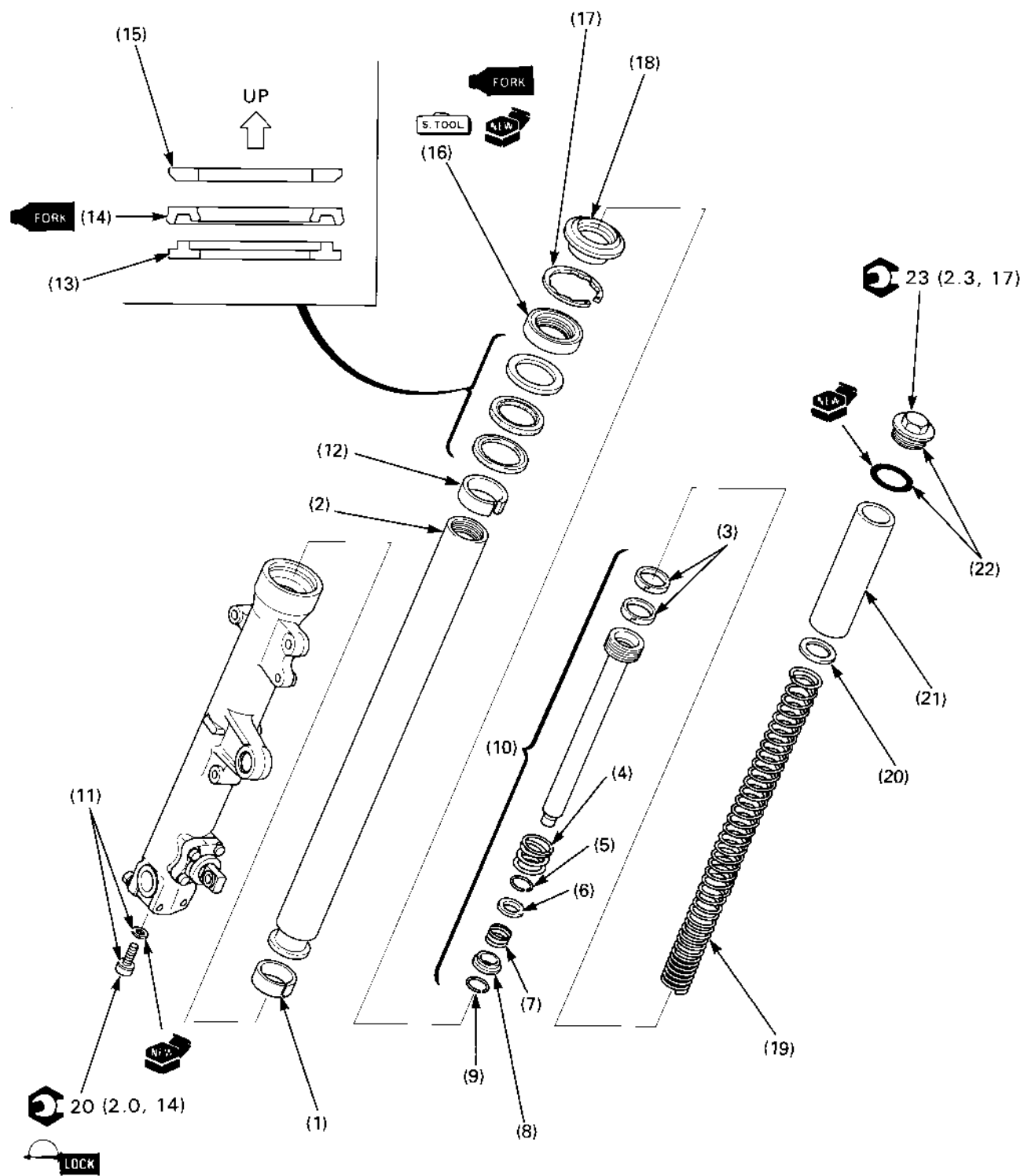
Standard and ABS/TCS Model



Procedure		Q'ty	Remarks
Assembly Order			
(1)	Fork tube bushing	1	
(2)	Fork tube	1	
(3)	Oil lock piece	1	Install onto the end of the fork damper.
(4)	Fork damper	1	
(5)	Socket bolt/washer	1/1	
(6)	Slider bushing	1	
(7)	Back-up ring	1	
(8)	Oil seal	1	NOTE <ul style="list-style-type: none"> • Wrap vinyl tape around the fork tube top end to avoid damaging the oil seal lip during installation. • Drive the slider bushing and oil seal into the slider using the fork seal driver body (07947—KA50100) and attachment (07947—KF00100).
(9)	Stopper ring	1	CAUTION <ul style="list-style-type: none"> • Be careful not to damage the fork tube sliding surface.
(10)	Dust seal	1	Pour in the fork fluid to the specified level with the fork fully compressed before installing the fork spring.
(11)	Fork spring	1	Wipe fluid off the spring thoroughly using a clean lint free cloth and install with the tightly wound coil end facing down.
(12)	Spring seat	1	
(13)	Spring collar	1	
(14)	Spring seat	1	
(15)	Lock nut	1	Install in the direction shown in the illustration—with the fully threaded end up.
(16)	Spring seat stopper	1	Install the stopper between the spring seat and lock nut while compressing the fork spring as shown. NOTE <ul style="list-style-type: none"> • Before installing the stopper, measure the distance between the lock nut and the top of the damper rod. It should be at least 10.5 mm (0.41 in)
(17)	O-ring	1	
(18)	Fork cap	1/1	Install the fork cap onto the damper rod and tighten the lock nut as shown, then screw it into the fork tube, but do not tighten yet. CAUTION <ul style="list-style-type: none"> • Be careful not to cross-thread the fork cap.
(19)	Fork pipe protector	1	Align the lug with the groove in the fork slider. NOTE <ul style="list-style-type: none"> • For easy installation, immerse in hot water (50–60°C/122–140°F).

After completing fork assembly, refer to fork installation procedures (page 13-11).

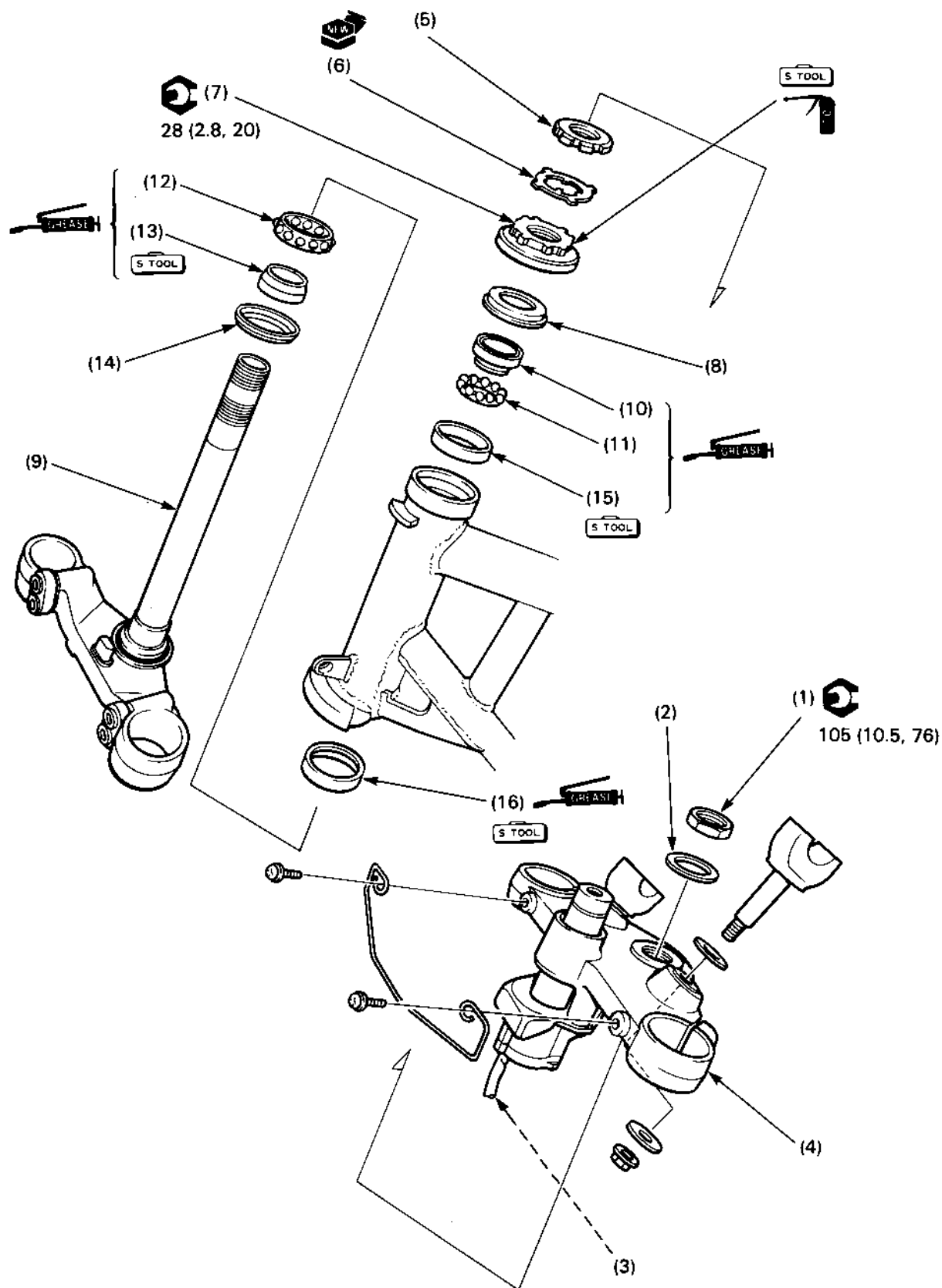
LBS-ABS/TCS Model



Procedure	Q'ty	Remarks
Assembly Order		
(1) Fork tube bushing	1	
(2) fork tube	1	
(3) Piston ring	2	Install onto the fork piston.
(4) Rebound spring	1	
(5) Stopper ring	1	
(6) Spring seat	1	
(7) Oil lock valve spring	1	
(8) Oil lock valve	1	
(9) Stopper ring	1	
(10) Fork piston assembly	1	
(11) Socket bolt/washer	1/1	
(12) Slider bushing	1	
(13) Back-up ring (lower)	1	Install with the flat side facing down.
(14) Packing	1	Install with the groove side facing down.
(15) Back-up ring (upper)	1	Install with the camfered side facing down.
(16) Oil seal	1	NOTE
		<ul style="list-style-type: none"> • Wrap vinyl tape around the fork tube top end to avoid damaging the oil seal lip during installation. • Drive the slider bushing and oil seal into the slider using the fork seal driver body (07947-KA50100) and attachment (07947-KA40200).
(17) Snap ring	1	CAUTION
		<ul style="list-style-type: none"> • Be careful not to damage the fork tube sliding surface.
(18) Dust seal	1	Pour in the fork fluid to the specified level before installing the fork spring.
(19) Fork spring	1	Wipe fluid off the spring thoroughly using a clean lint free cloth and install with the tightly wound coil end facing down.
(20) Spring seat	1	
(21) Spring collar	1	
(22) Fork cap/O-ring	1/1	Screw in the cap, but do not tighten yet.
		CAUTION
		<ul style="list-style-type: none"> • Be careful not to cross-thread the fork cap bolt.

After completing fork assembly, refer to fork installation procedures (page 13-13).

Steering Stem Removal/Installation



NOTE

- The steering head bearings and races should always be replaced as a set.
- When loosening and tightening the steering stem nut, temporarily install the fork legs.















Requisite Service

- Handlebar removal/installation (page 13-4)
- Fork removal/installation (page 13-11)

Procedure	Q'ty	Remarks
Removal Order		Installation is in the reverse order of removal.
(1) Steering stem nut	1	
(2) Washer	1	
(3) Ignition switch wire	1	Disconnect at the connector holder. At installation, route the wire properly (page 1-25).
(4) Fork top bridge	1	
(5) Lock nut	1	
(6) Lock washer	1	
(7) Steering bearing adjustment nut	1	
(8) Dust seal	1	
(9) Steering stem	1	
(10) Upper bearing inner race	1	
(11) Upper bearing	1	
(12) Lower bearing	1	
(13) Lower bearing inner race	1	Install using the steering stem driver (07946—MB00000).
(14) Dust seal	1	
(15) Upper bearing outer race	1	Remove using the race remover attachment (07953—MJ1000B). Install using the driver (07749—0010000) and attachment, 42 x 47 mm (07746—0010300).
(16) Lower bearing outer race	1	Remove using the race bearing remover (07946—3710500). Install with the driver (07749—0010000) and attachment, 52 x 55 mm (07746—0010400).

Symbols

The symbols used throughout this manual show specific service procedures. If supplementary information is required pertaining to these symbols, it would be explained specifically in the text without the use of the symbols.

	<p>Replace the part(s) with new one(s) before assembly.</p>
	<p>Use special tool</p>
	<p>Use optional tool. Use the same procedure you use to order parts.</p>
 <p>10 (1.0, 7.2)</p>	<p>Torque specification. 10 N·m (1.0 kg-m, 7.2 ft-lb)</p>
	<p>Use recommended engine oil, unless otherwise specified.</p>
	<p>Use molybdenum oil solution (mixture of the engine oil and molybdenum grease in a ratio of 1 : 1).</p>
	<p>Use multi-purpose grease (Lithium based multi-purpose grease NLGI #2 or equivalent)</p>
	<p>Use molybdenum disulfide grease (containing more than 3% molybdenum disulfide, NLGI #2 or equivalent) Example: Molykote® BR-2 plus manufactured by Dow Corning, U.S.A. Multi-purpose M-2 manufactured by Mitsubishi Oil Japan</p>
	<p>Use molybdenum disulfide paste (containing more than 40% molybdenum disulfide, NLGI #2 or equivalent) Example: Molykote® G-n Paste manufactured by Dow Corning, U.S.A. Honda Moly 60 (U.S.A. only) Rocol ASP manufactured by Rocol Limited, U.K. Rocol Paste manufactured by Sumico Lubricant, Japan</p>
	<p>Use silicone grease</p>
	<p>Apply a locking agent. Use a middle strength locking agent unless otherwise specified.</p>
	<p>Apply sealant</p>
	<p>Use brake fluid, DOT 3 or DOT 4. Use the recommended brake fluid, unless otherwise specified.</p>
	<p>Use Fork or Suspension Fluid.</p>